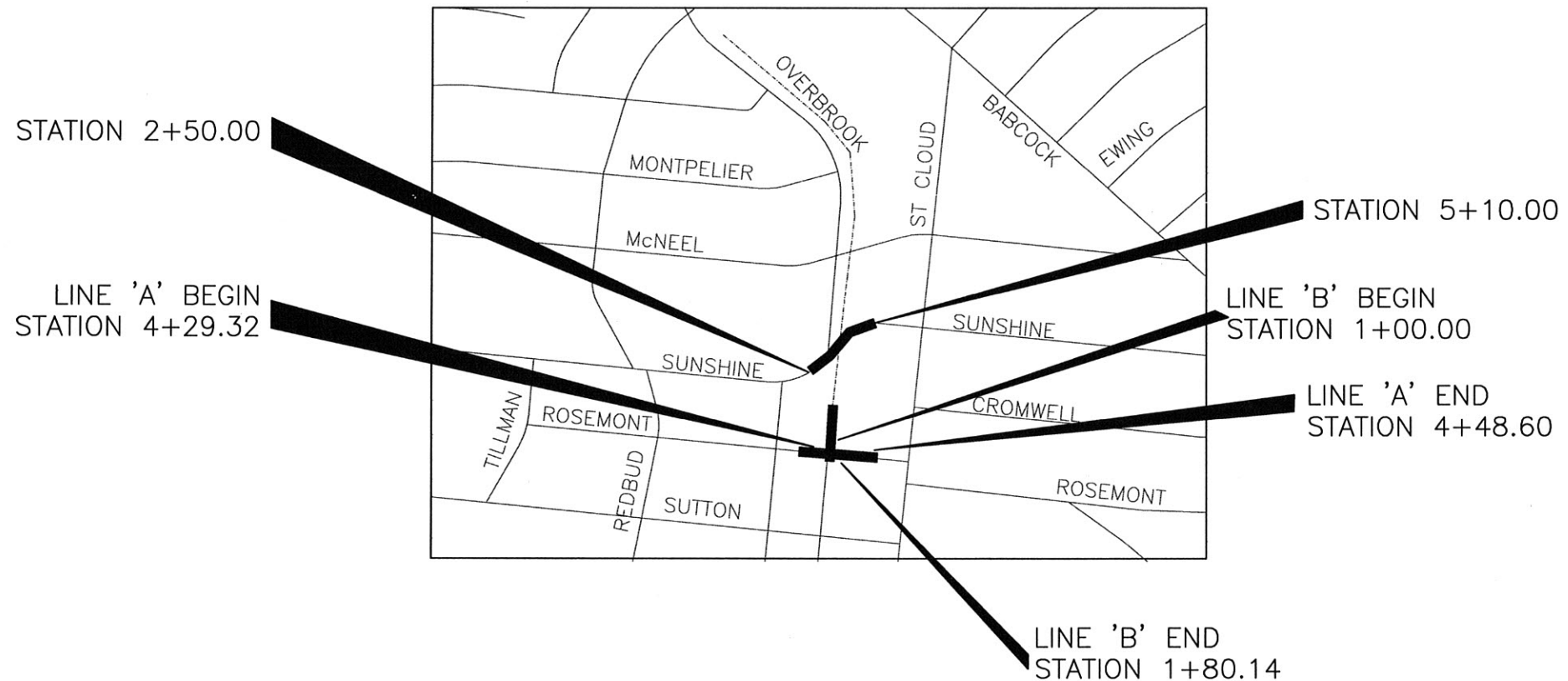


# SAN ANTONIO WATER SYSTEM

JOB NO: 12-5593  
UPPER WOODLAWN DRAINAGE  
ST CLOUD OPTION 2  
SANITARY SEWER



*Abel R. Hinojosa*  
6/27/14

NOT TO SCALE

**GENERAL SEWER NOTES**

1. ALL MATERIALS AND CONSTRUCTION PROCEDURES WITHIN THE SCOPE OF THIS CONTRACT SHALL BE APPROVED BY THE SAN ANTONIO WATER SYSTEM (SAWS) AND COMPLY WITH THE PLANS, SPECIFICATIONS, GENERAL CONDITIONS AND WITH THE FOLLOWING AS APPLICABLE:
  - A. CURRENT TEXAS COMMISSION ON ENVIRONMENTAL QUALITY (TCEQ) "DESIGN CRITERIA FOR DOMESTIC WASTEWATER SYSTEM", TEXAS ADMINISTRATIVE CODE (TAC) TITLE 30 PART 1 CHAPTER 217 AND "PUBLIC DRINKING WATER", TAC TITLE 30 PART 1 CHAPTER 290.
  - B. CURRENT TEXAS DEPARTMENT OF TRANSPORTATION (TXDOT) "STANDARD SPECIFICATIONS FOR CONSTRUCTION OF HIGHWAYS, STREETS AND DRAINAGE".
  - C. CURRENT SAN ANTONIO WATER SYSTEM "STANDARD SPECIFICATIONS FOR WATER AND SANITARY SEWER CONSTRUCTION".
  - D. CURRENT CITY OF SAN ANTONIO "STANDARD SPECIFICATIONS FOR PUBLIC WORKS CONSTRUCTION".
  - E. CURRENT CITY OF SAN ANTONIO "UTILITY EXCAVATION CRITERIA MANUAL".

2. THE CONTRACTOR IS TO MAKE ARRANGEMENTS WITH THE SAWS CONSTRUCTION INSPECTION DIVISION AT 233-3500 AND PROVIDE NOTIFICATION PROCEDURES THE CONTRACTOR WILL USE TO NOTIFY AFFECTED HOME RESIDENTS AND/OR PROPERTY OWNERS 48 HOURS PRIOR TO EXCAVATION.

3. THE CONTRACTOR SHALL VERIFY THE EXACT LOCATION OF UNDERGROUND UTILITIES AND DRAINAGE STRUCTURES AT LEAST 48 HOURS PRIOR TO CONSTRUCTION WHETHER SHOWN ON PLANS OR NOT. THE FOLLOWING CONTACT INFORMATION ARE SUPPLIED FOR VERIFICATION PURPOSES:

UTILITY LOCATE:  
 SAWS UTILITY LOCATES: 233-2009  
 SAWS PRODUCTION CONTROL CENTER: 233-2016  
 COSA DRAINAGE: 207-8048  
 COSA TRAFFIC SIGNAL OPERATIONS: 207-7720  
 TEXAS STATE WIDE ONE CALL LOCATOR: 1-800-545-6005 OR 811

4. THE CONTRACTOR IS RESPONSIBLE TO ENSURE THAT NO OVERFLOWS OR SPILLAGE OF SEWAGE OCCURS. SHOULD THIS OCCUR, THE CONTRACTOR SHALL:

- A. IDENTIFY THE SOURCE OF THE SPILL AND ATTEMPT TO ELIMINATE ANY ADDITIONAL SPILLAGE. NOTIFY SAWS CONSTRUCTION INSPECTIONS DIVISION AT 233-3500.
- B. CONTAIN THE SPILL IN PLACE AND PREVENT CONTAMINATION OF STREAMS.
- C. CLEAN UP THE SPILL AND DISPOSE OF CONTAMINATED MATERIALS.
- D. DISINFECT THE AREA OF THE SPILL WITH A MIXTURE OF HTH CHLORINE AND WATER.
- E. IDENTIFY AND TRAIN PERSONNEL RESPONSIBLE FOR SPILLAGE PREVENTION AND CONTROL.

NO SEPARATE MEASUREMENT OR PAYMENT SHALL BE MADE FOR THIS WORK. ALL WORK SHALL BE DONE ACCORDING TO GUIDELINES SET BY THE TCEQ AND THE SAWS.

5. THE CONTRACTOR SHALL COMPLY WITH CITY OR OTHER GOVERNING MUNICIPALITY'S TREE ORDINANCES WHEN EXCAVATING NEAR TREES.

6. THE CONTRACTOR SHALL NOT PLACE ANY WASTE MATERIALS OR SPOILS IN THE 100-YEAR FLOOD PLAIN WITHOUT FIRST OBTAINING AN APPROVED FLOOD PLAIN PERMIT.

7. SERVICE LATERAL CONNECTIONS:

- A. THE EXACT LOCATION AND ELEVATION OF THE SERVICE LATERALS AND MANHOLES SHALL BE FIELD VERIFIED BY THE CONTRACTOR. NO SEPARATE PAY ITEM (NSPI).
- B. A MINIMUM OF 3 FEET OF COVER IS TO BE MAINTAINED OVER THE SANITARY SEWER LATERALS AT SUBGRADE.
- C. ALL SEWER LATERAL SERVICES FOR FUTURE CONNECTIONS AS IDENTIFIED ON THE PLANS SHALL HAVE A ONE WAY CLEAN-OUT, CAPPED AND SEALED.
- D. THE CONTRACTOR SHALL BE RESPONSIBLE FOR MAINTAINING CONTINUOUS SERVICE DURING CONSTRUCTION OF THE SEWER WORK (NSPI).
- E. LATERALS SHALL BE CONSTRUCTED TO SERVE ALL EXISTING HOUSES AND PLATTED VACANT LOTS.

8. CONTRACTOR SHALL COORDINATE WITH SAWS CONSTRUCTION INSPECTION DIVISION AT 233-3500 AND/OR SAWS LIFT STATIONS OPERATIONS AT LEAST TWO WEEKS IN ADVANCE OF THE SHUTDOWN OF EXISTING FORCE MAINS OF ANY SIZE. THE CONTRACTOR MUST ALSO PROVIDE A SEQUENCE OF WORK AS RELATED TO THE SHUTDOWN INCLUDING ANY BYPASS PUMPING OR PUMP AND HAUL AS REQUIRED BY SAWS. PUMP AND HAUL WILL NOT BE ALLOWED OVER THE EDWARDS AQUIFER RECHARGE ZONE.

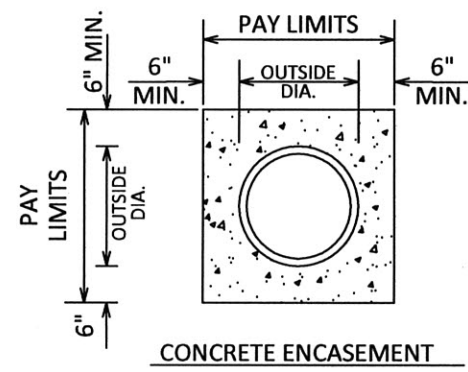
9. SEWER LINES LOCATED WITHIN OR CROSSING THE 5-YEAR FLOOD PLAIN OF A DRAINAGE WAY WILL BE PROTECTED FROM INUNDATION AND STREAM VELOCITIES WHICH COULD CAUSE EROSION AND SCOURING OF BACKFILL. THE TRENCH MUST BE CAPPED WITH CONCRETE TO PREVENT SCOURING OF BACKFILL. THE TRENCH MUST BE ENCASED IN CONCRETE. ALL CONCRETE SHALL HAVE A MINIMUM THICKNESS OF SIX INCHES.

10. WHERE WATER LINES AND NEW SEWER LINES ARE INSTALLED WITH A SEPARATION DISTANCE OF LESS THAN NINE FEET (I.E., WATER LINES CROSSING WASTEWATER LINES, WATER LINES PARALLELING WASTEWATER LINES, OR WATER LINES NEXT TO MANHOLES) THE INSTALLATION MUST MEET THE REQUIREMENTS OF 30 TAC 217.53(D) (PIPE DESIGN) AND 30 TAC 290.44(E) (WATER DISTRIBUTION).

11. ANY WORK COMPLETED WITHOUT PRIOR WRITTEN AUTHORIZATION WHICH IS NOT INCLUDED IN THESE PLANS AND SPECIFICATIONS WILL NOT BE COMPENSATED BY THE SAN ANTONIO WATER SYSTEM.

12. THE CONTRACTOR SHALL PROVIDE BYPASS PUMPING OF SEWAGE AROUND EACH SEGMENT OF PIPE TO BE REPLACED, IN ACCORDANCE WITH SAWS STANDARD SPECIFICATIONS FOR WATER AND SANITARY SEWER CONSTRUCTION ITEM NO. 864, "BYPASS PUMPING." PAYMENT FOR SUCH WORK WILL BE MADE UNDER THE BID ITEM SANITARY SEWER "BYPASS PUMPING" AS PER STANDARD SPECIFICATIONS FOR WATER AND SANITARY SEWER CONSTRUCTION ITEM NO. 864, "BYPASS PUMPING." THE CONTRACTOR SHALL PROVIDE IN WRITING A SEQUENCE OF BYPASS PUMPING FOR REVIEW AND APPROVAL BY THE INSPECTIONS DEPARTMENT. REFER TO THE CONSTRUCTION PLANS FOR THE CONSTRUCTION PHASING AND DIVERSION REQUIREMENTS. THE CONTRACTOR SHALL ALSO PROVIDE A DETAILED SKETCH SHOWING THE LOCATION OF BYPASS PUMPING EQUIPMENT FOR EACH LINE SEGMENT(S) AROUND WHICH FLOWS ARE BEING BYPASSED, ALONG WITH THE SPECIFICATION OF PUMPING EQUIPMENT, TYPE, SIZE, CAPACITY AND AMOUNT OF PUMPS REQUIRED TO HANDLE THE PEAK WET WEATHER FLOW.

13. SEE SAWS WEBSITE FOR DETAILS, WWW.SAWS.ORG



NOTE: ALL CONCRETE ENCASEMENT SHALL BE POURED AT A PLANE 6" ABOVE PIPE BETWEEN EXCAVATED TRENCH WALLS. SEE SAWS DETAILS DD-858-01

**INDEX OF DRAWINGS**

SHT NO.	DRAWING TITLE
1	TITLE SHEET
2	SANITARY SEWER NOTES & SHEET INDEX
3	ROSEMONT SANITARY SEWER LINE 'A'
4	ROSEMONT SANITARY SEWER LINE 'B'
5	OVERALL SEWER LAYOUT

**OVERALL SUMMARY OF QUANTITIES**

ITEM	DESCRIPTION OF ITEM	UNIT	QTY
100.1	MOBILIZATION	LS	1
101.1	PREPARATION OF RIGHT OF WAY	LS	1
550	TRENCH EXCAVATION PROTECTION	L.F.	160
848	8" PVC SANITARY SEWER LINE (0'-6')	L.F.	80
848	15" PVC SANITARY SEWER LINE (0'-6')	L.F.	20
852.1	SANITARY SEWER MANHOLE (0'-6')	EA	3
852.4	DOGHOUSE MANHOLE	EA	1
858	CONCRETE ENCASEMENT	CY	8.5
864	BYPASS PUMPING	LS	1
866	SEWER MAIN PRE-TELEVISION (8"-15")	LF	420
866	SEWER MAIN TELEVISION INSPECTION (8"-15")	LF	100
1103	POINT REPAIRS AND OBSTRUCTION REMOVALS	EA	2

**NOT TO SCALE**

**SA San Antonio Design Group Inc.**  
 CONSULTING ENGINEERS  
 12719 SPECTRUM DR, SUITE 100, SAN ANTONIO, TEXAS, 78213  
 PH:(210) 342-6700 FAX:(210) 342-6701 WWW.SADESIGNGROUP.COM  
 F-5226

**LEGEND**

PROP. WATER MAIN	---
EXIST. WATER MAIN	---6"CLW---
GAS MAIN	---2"
SANITARY SEWER	---8"SA---
STORM SEWER	---24"ST---
UTILITY POLE LINE	---O---
ELECTRIC CABLE	---
TELEPHONE CABLE	---
DUAL BRANCH SERV.	---
NEW UNMETERED SERVICE:	
3/4" SINGLE	
1" DUAL	
SERVICE RECONNECT:	
3/4" OR LARGER	
SERVICE RELAY:	---
3/4" OR LARGER	---
SERVICE RELOCATE:	---
3/4" OR LARGER	---
RELOCATE METER	▷
NEW SERVICE:	
3/4"	---
1" OR LARGER	---

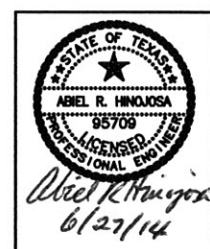
No.	Revision	Drawn	Approved	Date

**SA SANITARY SEWER NOTES**

DEVELOPER: SAN ANTONIO WATER SYSTEM  
 CONT. BUDGET PROJ.

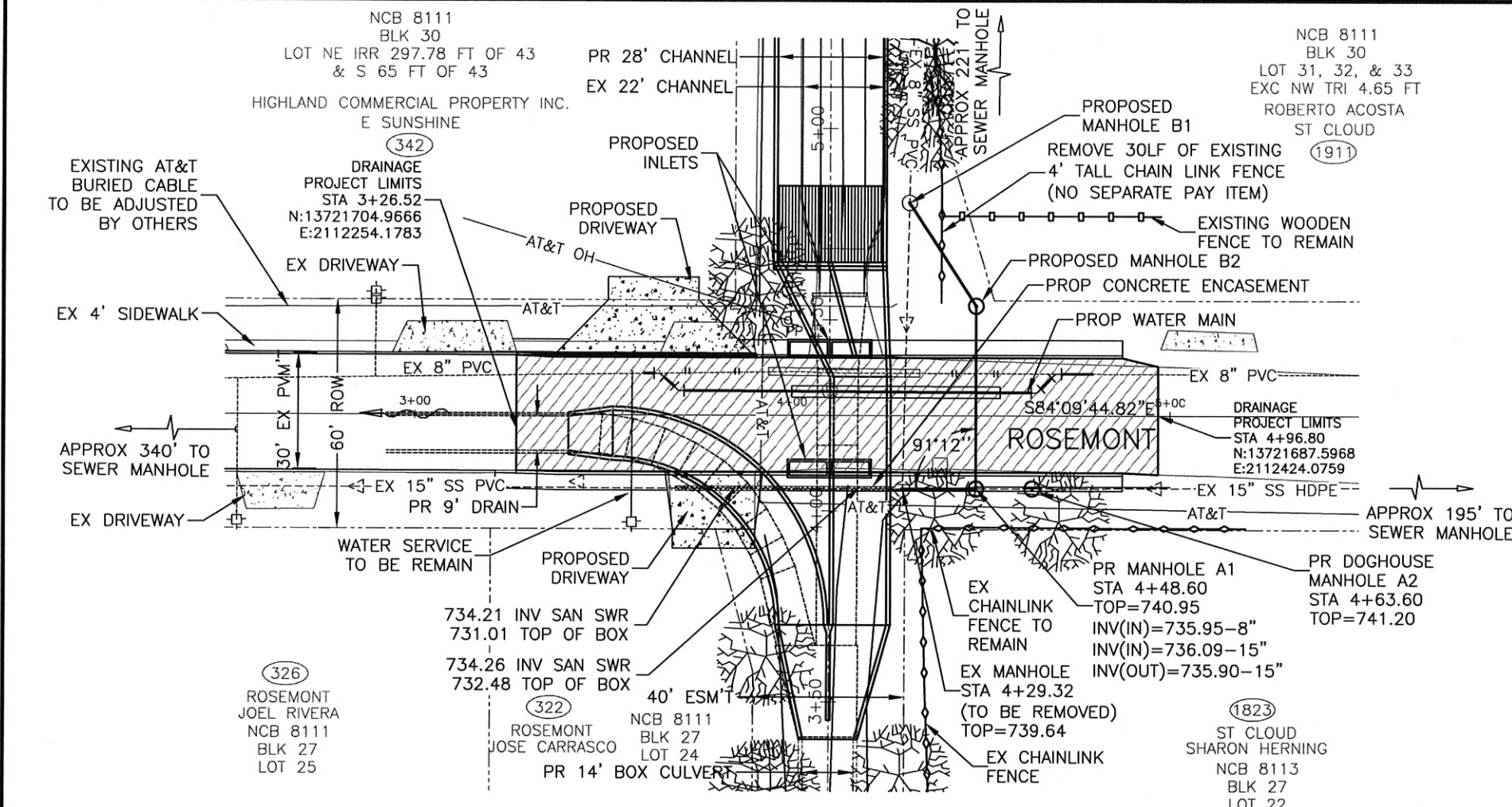
SUBMITTED \_\_\_\_\_  
 APPROVED \_\_\_\_\_

MAP No. \_\_\_\_\_ SHEET  
 SECT. No. \_\_\_\_\_  
 DR. ARH [CK. RJA] JOB No. 12-5593 2 OF 5



THIS DOCUMENT HAS BEEN PRODUCED FROM MATERIAL THAT WAS STORED AND/OR TRANSMITTED ELECTRONICALLY AND MAY HAVE BEEN INADVERTENTLY ALTERED. RELY ONLY ON FINAL HARD COPY MATERIALS BEARING THE CONSULTANT'S ORIGINAL SIGNATURE AND SEAL.

DATE: Jun 27, 2014, 8:14AM USER: R:\PROJECTS\1214\Upper Woodrow Drainage\DWG\SEWER Notes 4-24-14.dwg



### SUMMARY OF QUANTITIES

ITEM	DESCRIPTION OF ITEM	UNIT	QTY
550	TRENCH EXCAVATION PROTECTION	L.F.	80
848	15" PVC SANITARY SEWER LINE (0'-6")	L.F.	20
852.1	SANITARY SEWER MANHOLE (0'-6")	EA	1
852.4	DOGHOUSE MANHOLE	EA	1
858	CONCRETE ENCASMENT	CY	8.5
864	BYPASS PUMPING	LS	1
866	SEWER MAIN PRE-TELEVISION (8"-15")	LF	195
866	SEWER MAIN TELEVISION INSPECTION (8"-15")	LF	20
1103	POINT REPAIRS AND OBSTRUCTION REMOVALS	EA	1

### LEGEND

**EXISTING**

- IOI WATER OR GAS VALVE
- FLOW ARROW
- ⊗ FIRE HYDRANT
- PP OH ELEC W/ POLE
- ⊙ SANITARY SEWER/MANHOLE
- PROPERTY LINE
- ← GUY WIRE
- SIGN
- ⊗ FOUND IRON PIN
- ⊕ WATER METER
- 🌳 TREE
- ⓧ ADDRESS
- ▨ STREET RECONSTRUCTION
- ▩ MILL AND OVERLAY

**TRENCH EXCAVATION SAFETY PROTECTION**  
 CONTRACTOR AND/OR CONTRACTOR'S INDEPENDENTLY RETAINED EMPLOYEE OR STRUCTURAL DESIGN/GEOTECHNICAL/ SAFETY/EQUIPMENT CONSULTANT, IF ANY, SHALL REVIEW THESE PLANS AND AVAILABLE GEOTECHNICAL INFORMATION AND THE ANTICIPATED INSTALLATION SITE(S) WITHIN THE PROJECT WORK AREA IN ORDER TO IMPLEMENT CONTRACTOR'S IN THE CONTRACT DOCUMENTS. THE CONTRACTOR'S IMPLEMENTATION OF THESE SYSTEMS, PROGRAMS AND/OR PROCEDURES SHALL PROVIDE FOR ADEQUATE TRENCH EXCAVATION SAFETY PROTECTION THAT COMPLIES WITH, AS A MINIMUM, OSHA STANDARDS FOR TRENCH EXCAVATIONS. SPECIFICALLY, CONTRACTOR AND/OR CONTRACTOR'S INDEPENDENTLY RETAINED EMPLOYEE OF SAFETY CONSULTANT SHALL IMPLEMENT A TRENCH SAFETY PROGRAM IN ACCORDANCE WITH OSHA STANDARDS GOVERNING THE PRESENCE AND ACTIVITIES OF INDIVIDUALS WORKING IN AND AROUND TRENCH EXCAVATION.

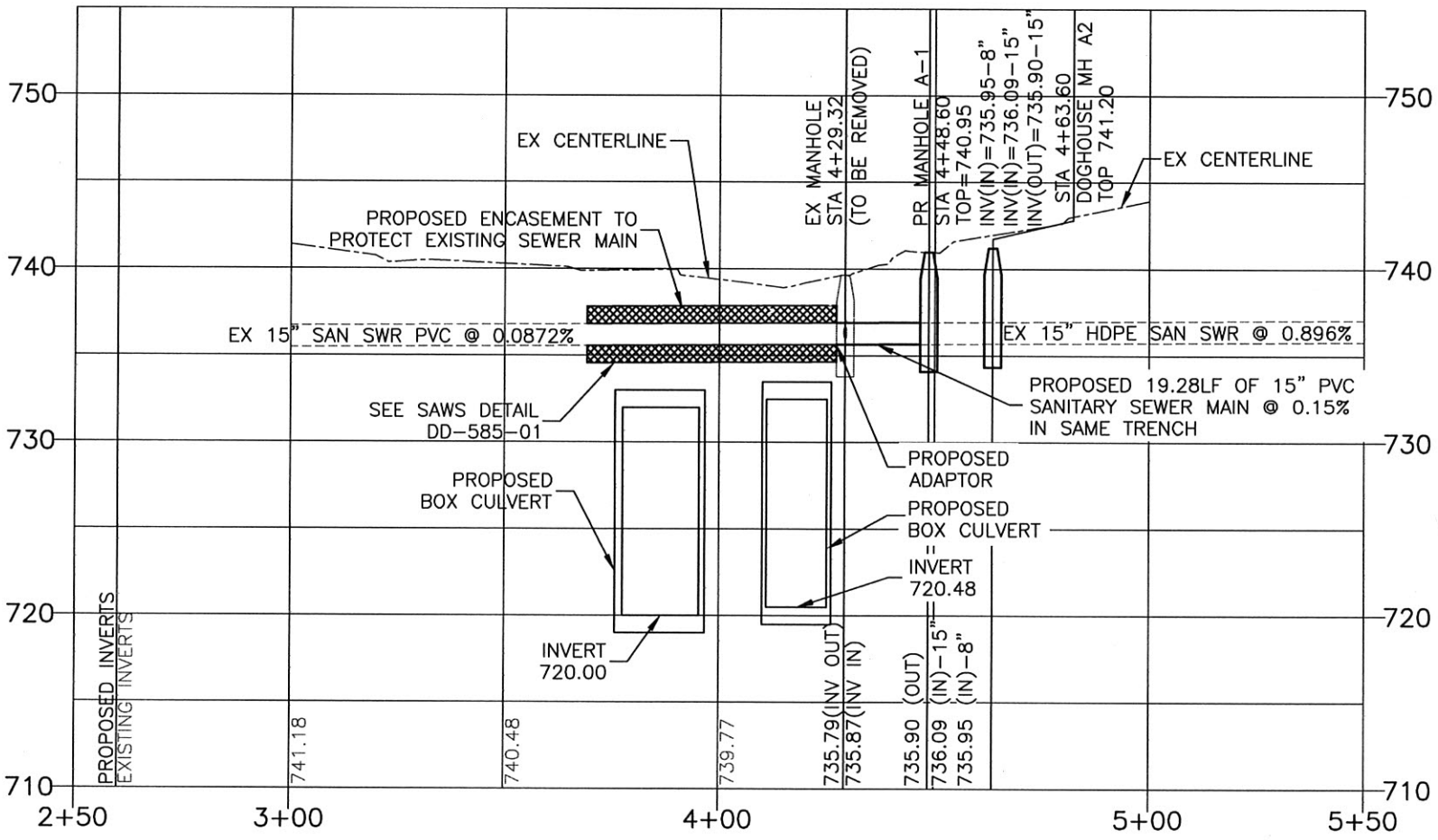
**AT&T NOTE**  
 NOTE: "THE EXISTENCE AND LOCATION OF UNDERGROUND CABLE INDICATED ON THE PLANS ARE TAKEN FROM THE BEST RECORDS AVAILABLE AND ARE NOT GUARANTEED TO BE ACCURATE. CONTRACTOR TO CONTACT THE TEXAS STATE WIDE ONE CALL LOCATOR NUMBER 1-800-344-8377. 48 HOURS PRIOR TO PLANT DURING CONSTRUCTION."

- GENERAL NOTES:**
- 1.) THE CONTRACTOR SHALL BE RESPONSIBLE FOR RESTORING TO ITS ORIGINAL, OR BETTER, CONDITION ANY DAMAGE DONE TO EXISTING CURBS, SIDEWALKS, OR DRIVEWAYS.
  - 2.) THE CONTRACTOR WILL BE RESPONSIBLE FOR PROTECTING CPS OVERHEAD AND UNDERGROUND ELECTRIC FACILITIES IF ADJACENT TO WORK AREA.
  - 3.) CONTRACTOR IS RESPONSIBLE FOR CONTACTING THE TEXAS STATE WIDE ONE CALL LOCATOR 48 HRS PRIOR TO EXCAVATION.

SCALE: 1" = 40' HORZ.  
 0 10 20 30 40  
 H: 1" = 40'

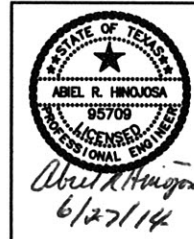
**NOT TO SCALE**

**SA DG INC**  
**San Antonio Design Group Inc.**  
 CONSULTING ENGINEERS  
 12719 SPECTRUM DR, SUITE 100, SAN ANTONIO, TEXAS, 78213  
 PH: (210) 342-6700 FAX: (210) 342-6701 WWW.SADESIGNGROUP.COM



### LEGEND

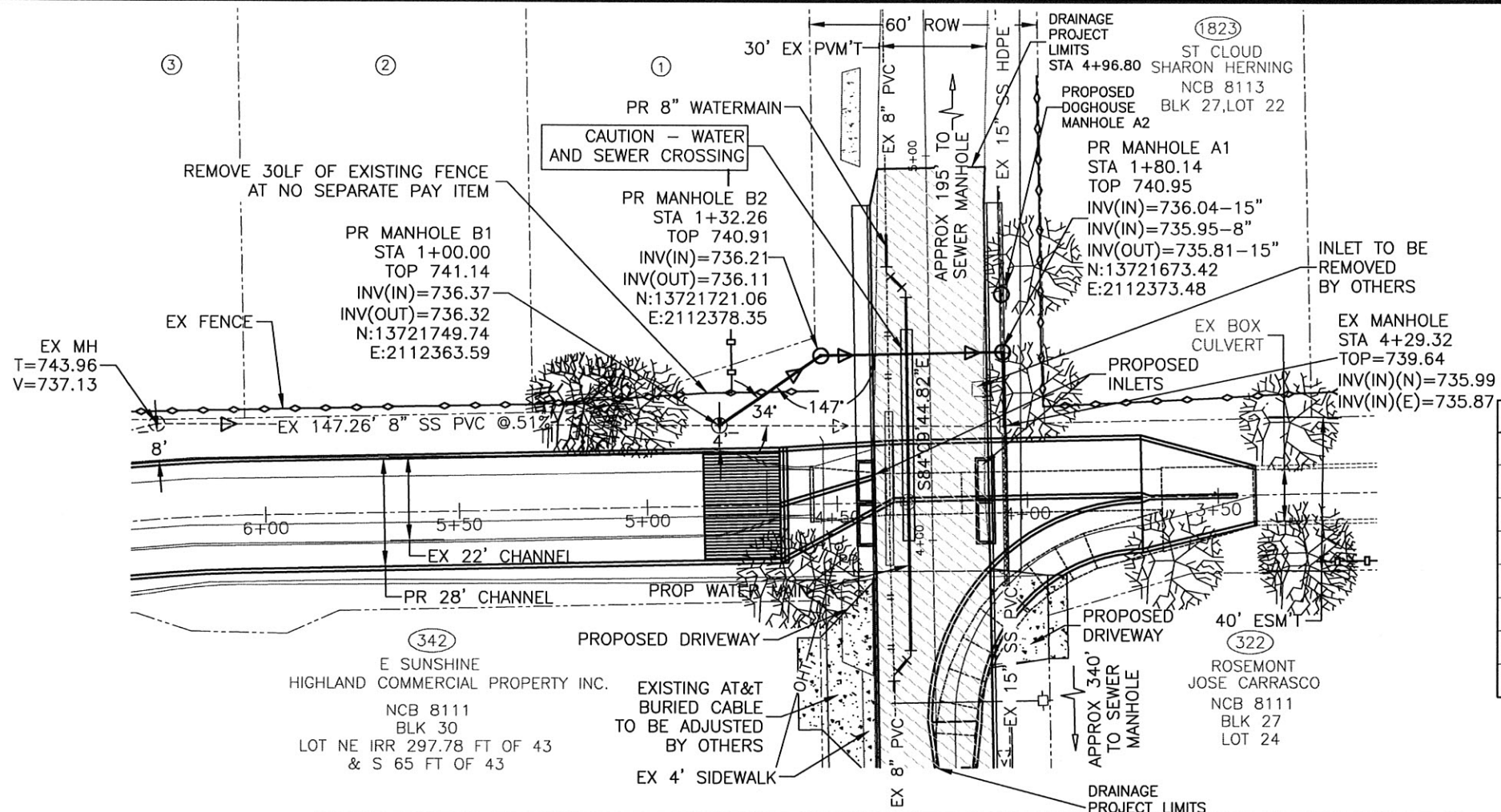
- PROP. WATER MAIN
- EXIST. WATER MAIN
- GAS MAIN
- SANITARY SEWER
- STORM SEWER
- UTILITY POLE LINE
- ELECTRIC CABLE
- TELEPHONE CABLE
- DUAL BRANCH SERV.
- NEW UNMETERED SERVICE:
- 3/4" SINGLE
- 1" DUAL
- SERVICE RECONNECT:
- 3/4"
- 1" OR LARGER
- SERVICE RELAY:
- 3/4"
- 1" OR LARGER
- SERVICE RELOCATE:
- 3/4"
- 1" OR LARGER
- RELOCATE METER
- NEW SERVICE:
- 3/4"
- 1" OR LARGER



No.	Revision	Drawn	Approved	Date
REVISIONS				
<b>ROSEMONT</b>				
<b>SANITARY SEWER</b>				
<b>LINE 'A'</b>				
DEVELOPER: SAN ANTONIO WATER SYSTEM		CONT. BUDGET PROJ.		
SUBMITTED		APPROVED		
MAP No.		SHEET		
SECT. No.		DR. ARH CK. RJA JOB No. 12-5593 3 OF 5		

THIS DOCUMENT HAS BEEN PREPARED FROM MATERIAL THAT WAS STORED AND/OR TRANSMITTED ELECTRONICALLY AND MAY HAVE BEEN INCOMPLETELY ALIGNED. ONLY THE ORIGINAL COPY MATERIALS BEARING THE CONSULTANT'S ORIGINAL SIGNATURE AND SEAL.

THIS DOCUMENT HAS BEEN PRODUCED FROM MATERIAL THAT WAS STORED AND/OR TRANSMITTED ELECTRONICALLY AND MAY HAVE BEEN INCOMPLETELY ALIGNED. REPLY ONLY ON FINAL HARD COPY MATERIALS BEARING THE CONSULTANT'S ORIGINAL SIGNATURE AND SEAL.



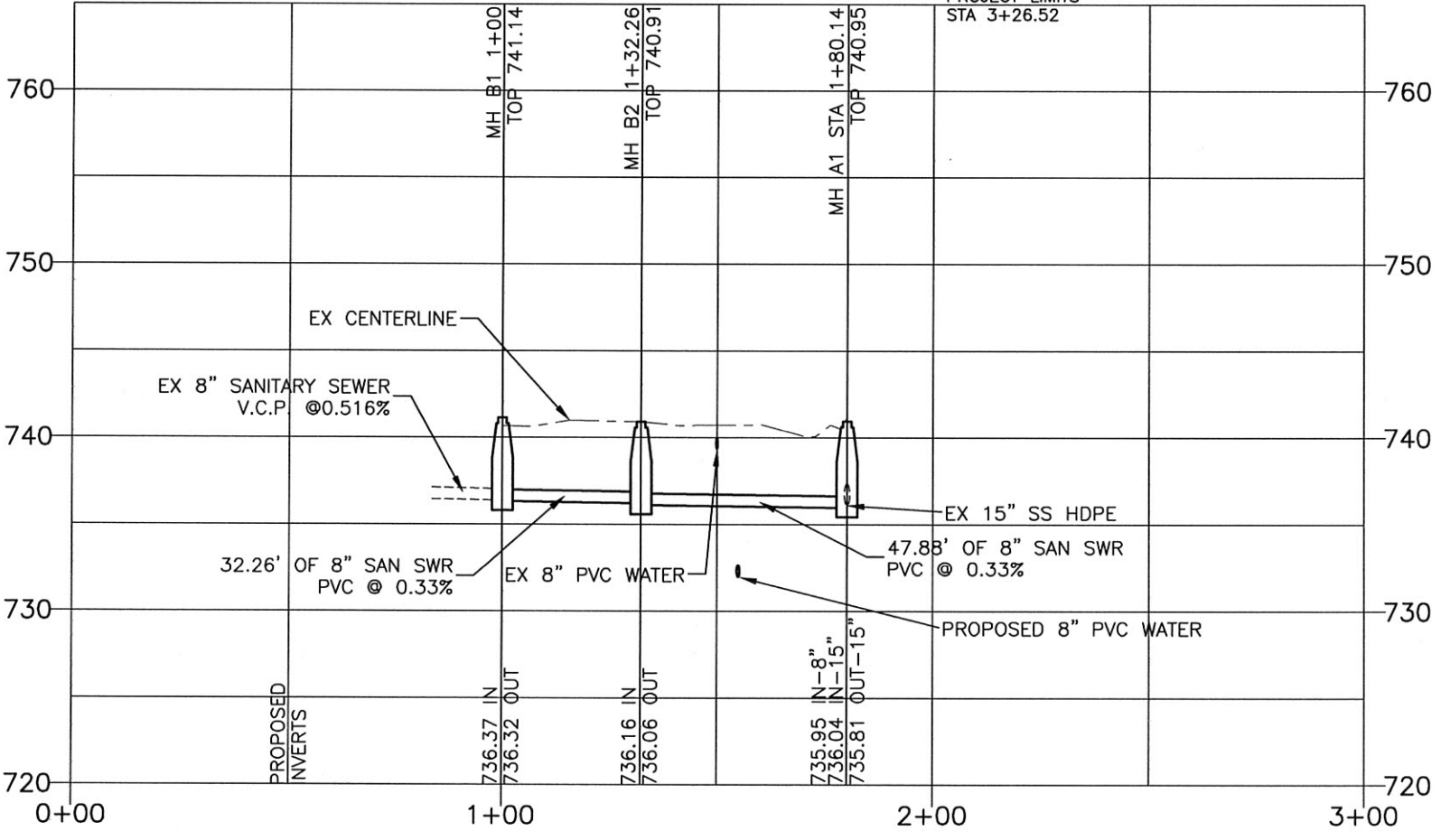
OWNERSHIP LIST	
OWNER/ADDRESS/LEGAL	
①	OWNER: ROBERTO ACOSTA ADDRESS: 1911 ST CLOUD NCB: 8111 BLOCK: 30 LOT: 32, 33 & 31 EXC NW TRI 4.65 FT
②	OWNER: SHARON SANDERS ADDRESS: 1915 ST CLOUD NCB: 8111 BLOCK: 30 LOT: W IRR 167.01 FT OF E IRR 169.97 FT OF 28, 29, & 30
③	OWNER: ARTHUR CASTRO ADDRESS: 1919 ST CLOUD NCB: 8111 BLOCK: 30 LOT: W IRR 177.96 FT OF 26 & W IRR 167.01 FT OF 27

SUMMARY OF QUANTITIES			
ITEM	DESCRIPTION OF ITEM	UNIT	QTY
550	TRENCH EXCAVATION PROTECTION	L.F.	80
848	8" PVC SANITARY SEWER LINE (0'-6')	L.F.	80
852.1	SANITARY SEWER MANHOLE (0'-6')	EA	2
864	BYPASS PUMPING	LS	1
866	SEWER MAIN PRE-TELEVISION (8"-15")	LF	225
866	SEWER MAIN TELEVISION INSPECTION (8"-15")	LF	80
1103	POINT REPAIRS AND OBSTRUCTION REMOVALS	EA	1

**LEGEND**

**EXISTING**

- ⊕ WATER OR GAS VALVE
- FLOW ARROW
- ⊕ FIRE HYDRANT
- ⊕ OH ELEC W/ POLE
- ⊕ SANITARY SEWER/MANHOLE
- PROPERTY LINE
- ← GUY WIRE
- SIGN
- ⊗ FOUND IRON PIN
- ⊕ WATER METER
- ⊕ TREE
- ⊕ ADDRESS
- ▨ STREET RECONSTRUCTION
- ▨ MILL AND OVERLAY



**TRENCH EXCAVATION SAFETY PROTECTION**

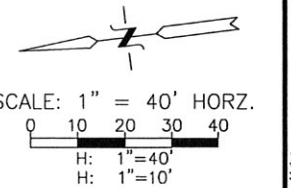
CONTRACTOR AND/OR CONTRACTOR'S INDEPENDENTLY RETAINED EMPLOYEE OR STRUCTURAL DESIGN/GEOTECHNICAL/ SAFETY/EQUIPMENT CONSULTANT, IF ANY, SHALL REVIEW THESE PLANS AND AVAILABLE GEOTECHNICAL INFORMATION AND THE ANTICIPATED INSTALLATION SITE(S) WITHIN THE PROJECT WORK AREA IN ORDER TO IMPLEMENT CONTRACTOR'S IN THE CONTRACT DOCUMENTS. THE CONTRACTOR'S IMPLEMENTATION OF THESE SYSTEMS, PROGRAMS AND/OR PROCEDURES SHALL PROVIDE FOR ADEQUATE TRENCH EXCAVATION SAFETY PROTECTION THAT COMPLIES WITH, AS A MINIMUM, OSHA STANDARDS FOR TRENCH EXCAVATIONS, SPECIFICALLY, CONTRACTOR AND/OR CONTRACTOR'S INDEPENDENTLY RETAINED EMPLOYEE OF SAFETY CONSULTANT SHALL IMPLEMENT A TRENCH SAFETY PROGRAM IN ACCORDANCE WITH OSHA STANDARDS GOVERNING THE PRESENCE AND ACTIVITIES OF INDIVIDUALS WORKING IN AND AROUND TRENCH EXCAVATION.

**AT&T NOTE**

NOTE: "THE EXISTENCE AND LOCATION OF UNDERGROUND CABLE INDICATED ON THE PLANS ARE TAKEN FROM THE BEST RECORDS AVAILABLE AND ARE NOT GUARANTEED TO BE ACCURATE. CONTRACTOR TO CONTACT THE TEXAS STATE WIDE ONE CALL LOCATOR NUMBER 1-800-344-8377. 48 HOURS PRIOR TO PLANT DURING CONSTRUCTION."

- GENERAL NOTES:**
- 1.) THE CONTRACTOR SHALL BE RESPONSIBLE FOR RESTORING TO ITS ORIGINAL, OR BETTER, CONDITION ANY DAMAGE DONE TO EXISTING CURBS, SIDEWALKS, OR DRIVEWAYS.
  - 2.) THE CONTRACTOR WILL BE RESPONSIBLE FOR PROTECTING CPS OVERHEAD AND UNDERGROUND ELECTRIC FACILITIES IF ADJACENT TO WORK AREA.
  - 3.) CONTRACTOR IS RESPONSIBLE FOR CONTACTING THE TEXAS STATE WIDE ONE CALL LOCATOR 48 HRS PRIOR TO EXCAVATION.

**NOT TO SCALE**



**SA DG San Antonio Design Group Inc.**  
CONSULTING ENGINEERS  
12719 SPECTRUM DR, SUITE 100, SAN ANTONIO, TEXAS, 78213  
PH:(210) 342-6700 FAX:(210) 342-6701 WWW.SADESIGNGROUP.COM

**LEGEND**

- PROP. WATER MAIN
- EXIST. WATER MAIN
- GAS MAIN
- SANITARY SEWER
- STORM SEWER
- UTILITY POLE LINE
- ELECTRIC CABLE
- TELEPHONE CABLE
- DUAL BRANCH SERV.
- NEW UNMETERED SERVICE:
- 3/4" SINGLE
- 1" DUAL
- SERVICE RECONNECT:
- 3/4"
- 1" OR LARGER
- SERVICE RELAY:
- 3/4"
- 1" OR LARGER
- SERVICE RELOCATE:
- 3/4"
- 1" OR LARGER
- RELOCATE METER
- NEW SERVICE:
- 3/4"
- 1" OR LARGER



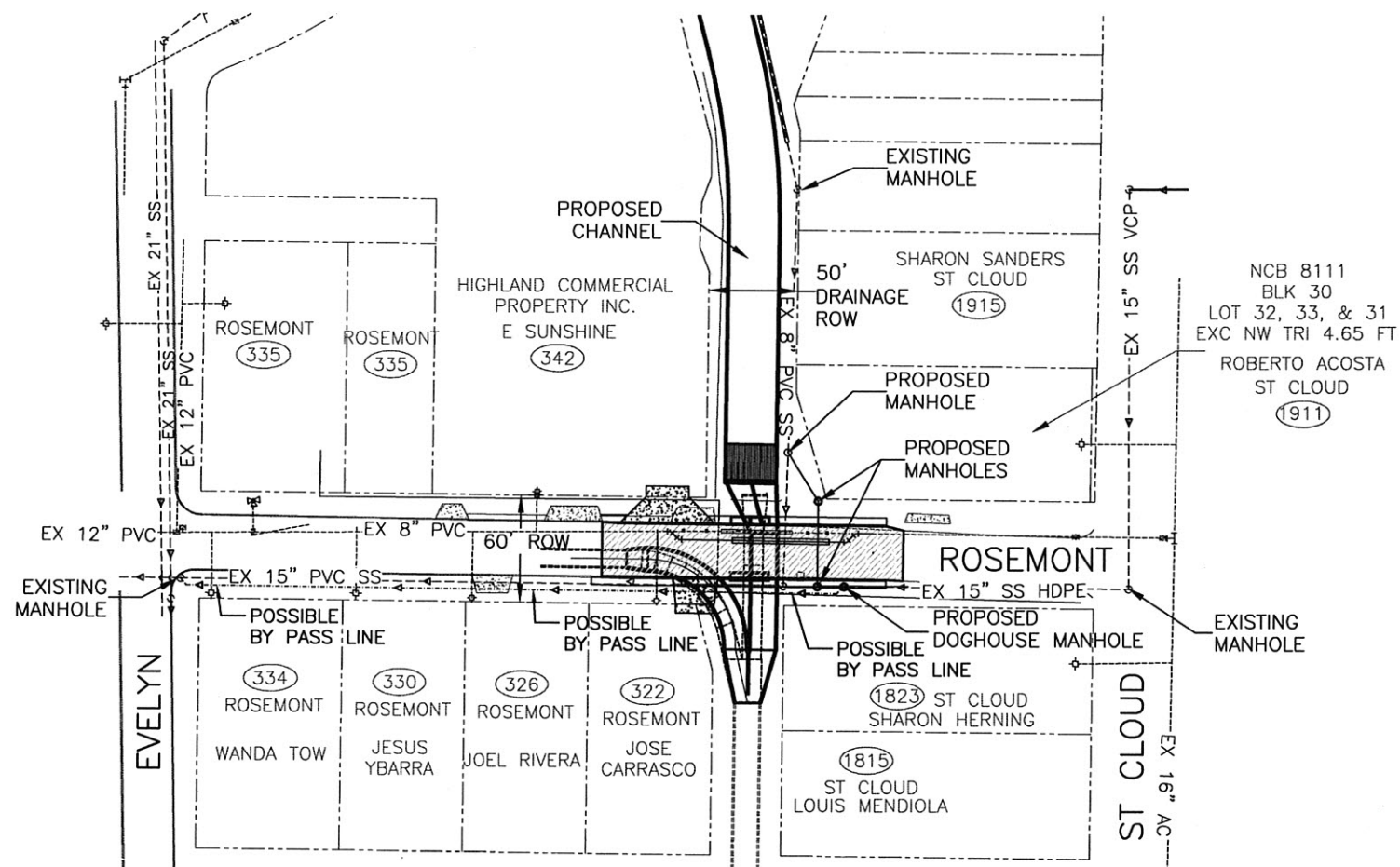
No.	Revision	Drawn	Approved	Date
REVISIONS				
<b>ROSEMONT SANITARY SEWER LINE 'B'</b>				
DEVELOPER: SAN ANTONIO WATER SYSTEM		CONT. BUDGET PROJ.		
SUBMITTED _____		APPROVED _____		
MAP No. _____		SHEET _____		
SECT. No. _____		DR. ARH   CK. RJA   JOB No. 12-5593   4 of 5		

SANITARY SEWER PIPE FLOW DATA

PIPE NAME	FROM	TO	SIZE (DIA.)	SLOPE	LENGTH	Q (FULL)
LINE 'A'	ST CLOUD	PROPOSED MANHOLE A-1	15 INCH HDPE	0.896%	175LF	3243 GAL/MIN

LEGEND

- ⊕ WATER OR GAS VALVE
- ⊕ FIRE HYDRANT
- PP OH ELEC W/ POLE
- ⊕ SANITARY SEWER/MANHOLE
- PROPERTY LINE
- ⊕ WATER METER
- (XXXX) ADDRESS
- [Stippled Box] MILL AND OVERLAY
- [Hatched Box] STREET RECONSTRUCTION



SANITARY SEWER BYPASS NOTES

- 1.) ALL WORK FOR BYPASS PUMPING SHALL BE DONE IN ACCORDANCE TO SAWS SPECIFICATION NO. 864 BYPASS PUMPING.
- 2.) THE CONTRACTOR SHALL FIELD VERIFY MANHOLE INVERTS AND SANITARY SEWER LINE SLOPES PRIOR TO COMMENCING BYPASS WORK.
- 3.) THE CONTRACTOR SHALL MAINTAIN SEWAGE FLOW IN THE CONSTRUCTION AREA IN ORDER TO PREVENT BACKUP AND/OR OVERFLOW INTO PIPE SEGMENTS AND LATERALS, ADJACENT DITCHES, STORM SEWERS AND WATERWAYS.
- 4.) THE CONTRACTOR SHALL PROVIDE AND MAINTAIN ADEQUATE PUMPING EQUIPMENT, FORCE MAINS AND OTHER NECESSARY APPURTENANCES IN ORDER TO MAINTAIN RELIABLE SANITARY SEWER SERVICE IN ALL SANITARY SEWER LINES AS REQUIRED FOR CONSTRUCTION.
- 5.) ANY SPILLAGE, BACKUPS AND/OR OVERFLOWS, ETC. AS A RESULT OF INADEQUATE EQUIPMENT ARE THE SOLE RESPONSIBILITY OF THE CONTRACTOR.

0 25 50 75 100  
SCALE: 1" = 100'  
NOT TO SCALE

THIS DOCUMENT HAS BEEN PRODUCED FROM MATERIAL THAT WAS STORED AND/OR TRANSMITTED ELECTRONICALLY AND MAY HAVE BEEN INDIVIDUALLY ALTERED. GET ONLY ON FINAL HARD COPY MATERIALS BEARING THE CONSULTANT'S ORIGINAL SIGNATURE AND SEAL.

**San Antonio Design Group Inc.**  
CONSULTING ENGINEERS  
12719 SPECTRUM DR, SUITE 100, SAN ANTONIO, TEXAS, 78213  
PH: (210) 342-6700 FAX: (210) 342-6701 WWW.SADESIGNGROUP.COM  
F-5226

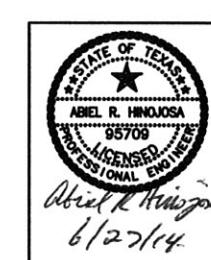
LEGEND

PROP. WATER MAIN	---
EXIST. WATER MAIN	—○— 6" C.I.M.
GAS MAIN	— 2"
SANITARY SEWER	— 8" S
STORM SEWER	— 24" ST
UTILITY POLE LINE	—○—
ELECTRIC CABLE	—
TELEPHONE CABLE	—
DUAL BRANCH SERV.	—
NEW UNMETERED SERVICE:	
3/4" SINGLE	—
1" DUAL	—
SERVICE RECONNECT:	—
3/4"	—
1" OR LARGER	—
SERVICE RELAY:	—
3/4"	—
1" OR LARGER	—
SERVICE RELOCATE:	—
3/4"	—
1" OR LARGER	—
RELOCATE METER	▷
NEW SERVICE:	
3/4"	—
1" OR LARGER	—

No.	Revision	Drawn	Approved	Date

REVISIONS

		<b>OVERALL SEWER LAYOUT</b>	
		DEVELOPER: SAN ANTONIO WATER SYSTEM	CONT. BUDGET PROJ.
SUBMITTED _____		APPROVED _____	
MAP No. _____	SHEET		5 OF 5
SECT. No. _____	DR. ARH CK. RJA	JOB No. 12-5593	



DATE: Jun 27, 2014, 9:33AM USER: ahinojosa FILE: R:\V-PROJECTS\12174\01\San Antonio Design Group\Drawings\12174-01-01-Overall Sewer Layout.dwg